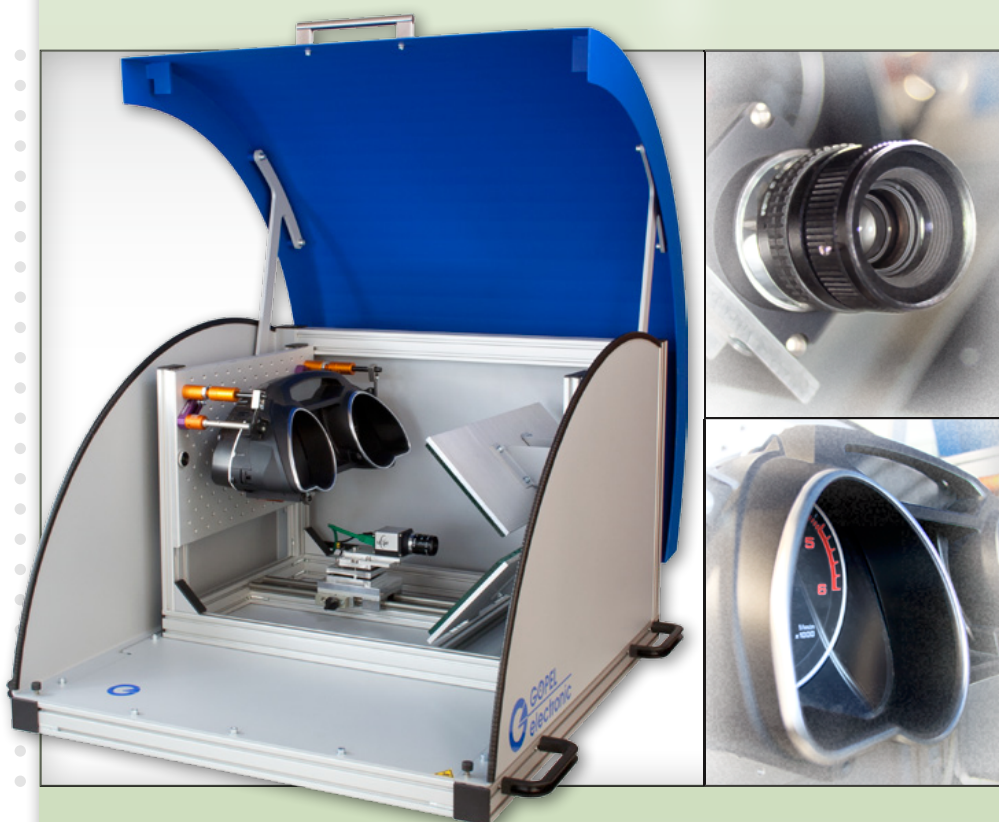
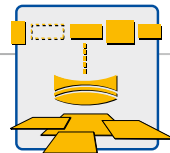


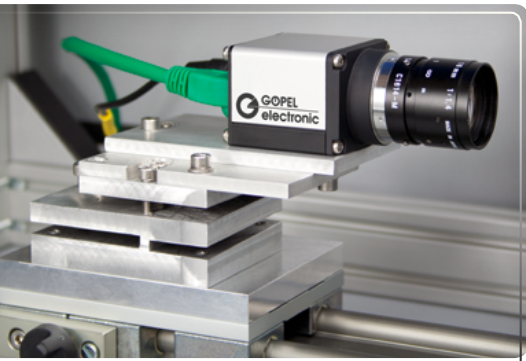
TOM CombiLine™

Compact and Flexible System for Display Test

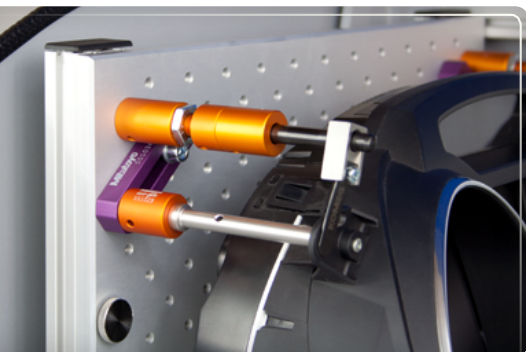


Industrial Vision Solutions

TOM CombiLine



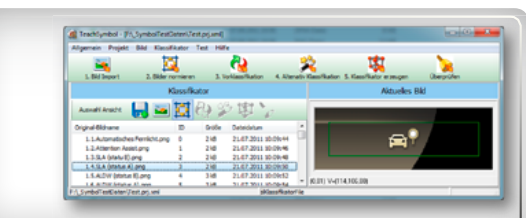
High-Resolution 5-Megapixel Camera
on Variable Positioning Unit



Flexible UUT Holder



Reading of Asian Fonts, Automated Elimination
of Border Objects, Reading of Inverted Texts



Fully Automated Teaching
of Symbol Classifiers

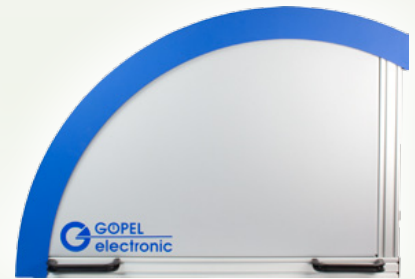
Optical Inspection System for Instrument Clusters

TOM CombiLine is a compact desktop system for inspection of prototypes and evaluation samples of instrument clusters. The TOM CombiLine has been designed to inspect display contents like symbols and characters.

The innovative easyOCR function allows inspection of Latin, Cyrillic, Greek and East Asian characters without teaching processes. The easySymbolMatch function enables the automated generation of highly efficient classifiers used for symbol detection and highly efficient object recognition. Furthermore, the TOM system can be used to check backlight brightness and indicator positions in instrument clusters.

System Configuration

Images of the instrument clusters are not viewed directly but through an integrated mirror system to ensure the system's compactness. The flexible UUT fixture enables the optical inspection of instrument clusters of any type. Delivery of the test system includes a PC and the image processing software TOM Line. Depending on the inspection application the system can be equipped with up to three 5-megapixel cameras. UUT control including restbus simulation is optionally available.



TOM CombiLine System Parameters

Camera Technology	1 to 3 5-megapixels colour cameras; other configurations on request
UUT Holder	flexible clamping elements for vehicle instrument clusters; max. width ca. 400 mm
Options	LED lighting; UUT control including restbus simulation
Dimensions	620 mm (W) x 690 mm (D) x 450 mm (H)



ISO 9001 zertifiziert

Autorisierter Distributor:

GÖPEL electronic GmbH
Göschwitzer Straße 58/60
D-07745 Jena
Tel.: 03641-6896-0
Fax: 03641-6896-944
E-Mail: sales@gopel.com
Web: www.gopel.com